

MS FOCUS ON FASHION



Welcome to
the 2nd Annual
MS Focus on Fashion

Presented by



November 14, 2025

Westin Fort Lauderdale Beach Resort

Featuring designs by
Nancy Volpe Beringer,
Season 18 Project Runway finalist,
modeled by people with MS.

Innovating in MS Together



Research Is Our Passion
Your Care Is Our Priority

MS=multiple sclerosis.

 **NOVARTIS**

Novartis Pharmaceuticals Corporation
East Hanover, New Jersey 07936-1080

© 2022 Novartis

5/22

210002



A Message From Our Executive Directors



The one constant with multiple sclerosis is change. MS is unpredictable, so in order to live well with the condition, being adaptable is necessary. People with MS have to adapt their family lives, work lives, social lives, and even something as fundamental to their lives as their clothing.

When MS affects your dexterity, motor control, or sensation, even getting dressed each day can become a challenge. Thankfully, designers and major retailers are paying more attention to the needs of individuals with disabilities. But we recognized a gap in awareness. Many in the public weren't aware of the need for such adaptations, and many who have need of these adaptations weren't aware of the solutions available today. Wouldn't it be wonderful, we thought, if we could raise awareness about adaptive clothing and support the vital programs that help people with MS at the same time? Thus the idea for MS Focus on Fashion was born.

We have so many people to thank for their support and help in making tonight possible. First, we want to recognize the tireless efforts of Traci Allyn Shur, MS Focus Director of Philanthropy and Michele Austin, our Fund Development and Grants Manager. They have nurtured and grown this event from its inception with exceptional skill. Next, the enthusiastic response of our committee members to our call for help, and their months of hard work to guide, enhance, and promote this evening's event. We also want to thank our corporate partners, whose financial support not only makes this event possible, but allows us to continue offering the vital programs and services that meet the critical needs of people with MS.

Finally, our heartfelt thanks to each of you in attendance for being here to share this moment with us. We hope to make it a fabulously memorable experience for you, and that it will lead to a meaningful connection to our cause. With your support we can make a difference in the lives of people living with MS and their families.

Enjoy the evening!
Kasey Minnis and Natalie Blake

Message from the President



On behalf of MS Focus: the Multiple Sclerosis Foundation, its board of directors, staff and – most importantly – those who benefit from the services of MS Focus each day, I want to welcome you to our signature annual event, MS Focus on Fashion.

Tonight's activities will feature spectacular adaptive fashion, including custom designs from celebrated designer Nancy Volpe Beringer. Her work spotlights the beauty, creativity, and innovation that make adaptive fashion possible.

To kick us off, I want to thank Novartis for being our presenting sponsor as well as the many contributors, donors and supporters who helped make tonight a huge success. Your commitment will go a long way in accomplishing our mission to assist persons affected by MS to maintain their health, safety, self-sufficiency, and personal well-being.

So, thank you! Now, on with the show.

Charles Eader

MS Focus Board of Directors

- Charles Eader:** President - Bridgewater, N.J.
John Blackstock: Secretary - Bradenton, Fla.
Courtney Cox: Director - Tallahassee, Fla.
Melody Ridley: Director - Atlanta, Ga.
G. Mark Shalloway, Esq.: Vice President -
West Palm Beach, Fla.
Kara Skorupa, Esq.: Director -
Miami Beach, Fla.
Darcell Streeter: Director - Hallandale, Fla.

Evening Agenda

MS FOCUS ON FASHION



Presented by



November 14, 2025

Cocktail Reception and Silent Auction

Silent Auction Closes at 8:30

Welcome and Sponsor Recognition

Julie Guy, 101.5 Lite FM - Mistress of Ceremonies

Champagne Toast

Mark Shalloway - Board Vice President,
Multiple Sclerosis Foundation

Sponsored by Your Eye Specialists

Presentation of the

Sean Giblin Memorial Award to

Nicole Pedra

Dinner

Live Auction

Exclusive Adaptive Fashion Show

Dancing and Celebration Continues

MS Focus on Fashion Planning Committee

Eileen Austin
Maggie Courier
Courtney Cox
Monique Fraser
June McCarthy
Lindsey Reynolds

Skylar Reynolds
Neil Saffer
Todd Schneider
Stacy Schwartz
Kara Skorupa
Phoebe Walker

Natalie Blake, Executive Director
Kasey Minnis, Executive Director
Traci Allyn Shur, Director of Philanthropy
Michele S. Austin, Fund Development Coordinator



About MS and MS Focus

The Multiple Sclerosis Foundation, known in the MS community as MS Focus, is a nonprofit organization focused on providing free services that address the critical needs of people with MS and their families, helping them maintain the best quality of life.

The symptoms of MS are unpredictable and may increase in severity over time. This presents physical, emotional, and financial challenges families must face. MS Focus is here to provide the support, education, and assistance needed to adapt to these challenging circumstances. Our primary focus is on providing individuals with MS the help they need to maintain their health and well-being, to continue to be productive and independent, and to keep a roof over their heads and a safe environment in their home.

MS Focus provides grants to individuals with MS for much-needed services

and devices. These may be directly related to their healthcare, such as funding for a neurologist visit for the uninsured, providing homecare, or physical, occupational, or speech therapy. Or they may be items that aid in adapting to changing circumstances, such as portable wheelchair ramps, hand controls for vehicles, or cooling aids for heat intolerance.

Also, to help individuals with MS care for their health and make educated decisions about their care, we provide educational materials, such as fact sheets and booklets, to those with MS and their care team. We sponsor educational programs throughout the country that people can attend in-person or virtually. Furthermore, we actively assist people with MS in maintaining wellness through such services as support groups, exercise classes, and lifestyle education.

MENU

First Course

- House Field Greens Salad
Grape Tomato, Cucumber, Julienned Vegetables
Balsamic Vinaigrette and Citrus-Dijon Vinaigrette

Main Course:

- New Orleans Beef Short Rib and Brown Sugar Baked Salmon
- White Cheddar Smashed Potatoes, Fried Brussel Sprouts

Dessert:

- Mango Passion Cheesecake



I am overwhelmed by all the love and support received for the 2nd annual MS Focus on Fashion event presented by Novartis. My most sincere thanks to Michele Austin fund development coordinator extraordinaire, my right hand and sometimes my left, and my endless supplier of Krispy Kreme jelly donuts. Thank you to Natalie Blake and Kasey Minnis for your leadership and always being available to help whenever needed. Thanks to the MS Focus staff, our amazing volunteers, our rock star models, incredibly generous sponsors and all those that gave so much time, talent and treasure to make this an unforgettable evening. Thank you for continuing to fuel my passion to serve all those living with multiple sclerosis. It has been a pleasure and a privilege to bring this magical evening to fruition.

Traci Allyn Shur, CFRE
Director of Philanthropy
Multiple Sclerosis Foundation

Sean Giblin Memorial Award



Sean Giblin, a beloved member of the MS Focus team, passed away in 2023 at the age of 34 because of complications of his MS. Sean had a smile and a charm that made him an instant friend to everyone he met, and his voice on the phone as a MS peer counselor, was a lifeline for others with MS for over ten years. Despite having an aggressive and unrelenting form of MS, Sean devoted every day to making the lives of others better. Sean

remains a guiding star for us at the Foundation, an inspiration to make the lives of others better each day. We are honored to present Nicole Pedra with the inaugural Sean Giblin Memorial Award.

Nicole Pedra, Award Recipient



An MS patient, working as a chronic illness digital creator, advocate and speaker, Nicole Pedra spends time between Los Angeles and Atlanta. As this year's award recipient, she joins us here tonight believing that it is important for MS patients to see that they are not alone, that they deserve to be seen and that "we can still take up space and live fully."

After tonight's Focus on Fashion, Nicole would like patrons to know that "MS is more than just a diagnosis. It is a community of people with strength, resilience and stories worth being seen." She believes that if guests leave with more understanding, then the show has done what it is meant to do.

Nicole explains that she sees fashion as a powerful way to show identity and that having a disability should not remove that manner of expression. "Adaptive fashion gives people the chance to feel confident, comfortable and true to themselves; that can make all the difference in how they show up in the world."

Designer Biography



At age 64, Nancy made history as the oldest ever designer on the show *Project Runway* and paved her way to the show's finale through her creativity, determination, and quest for melding sustainability and inclusivity. She presented the first ever zero-waste *Project Runway* finale at New York Fashion Week with models of all sizes, races, gender identities and abilities.

Most recently during New York Fashion Week, the Fashion Impact Fund invited Volpe Beringer to participate in a round table discussion held at the United Nations which focused on the role of media to amplify female founders transforming the fashion industry.

Model Biographies



An attorney from Cutler Bay, Fla., Ayesa Conger was diagnosed with MS in 2016. Since then, she has experienced how this illness affects not just the body, but the “sense of independence, dignity and identity” as well. MS has transformed how Ayesa dresses at times. She has found adaptive fashion makes that daily task easier. “It helps me feel confident - like myself again. That’s powerful.”



Maggie Courier, from Margate, Fla., is a retired high school English teacher and a volunteer patient advocate at MS Focus. Having lived with her diagnosis for 27 years, Maggie is a proud model in tonight's event. “This show lets us prove to ourselves and to others that MS is merely a part of our lives, not our entire lives.” Maggie is happy to be wearing tonight's adaptive designs.



MS Focus volunteer, Dan Digmann, from Mt. Pleasant Michigan was diagnosed with MS more than 25 years ago. That has not stopped him in his career as a copywriter nor in his personal quest to educate the public about MS. Dan wants the audience to leave with a greater understanding of MS, the mission of MS Focus and appreciation for the adaptive fashion designers.



Jennifer Digmann, from Mt. Pleasant, Mich., is a volunteer with many MS organizations and her church, she also spends time working with her husband Dan, (another model in tonight's show), writing for and managing their website and podcast, "A Couple Takes On MS." She feels pride for being a model in this show, believing that being included proves "an MS diagnosis does not stop you."



Originally from New Jersey, Tony Garcia, a resident of Florida, is a retired computer technologist and martial artist, Tony is now a certified Tai Chi instructor in the central Florida area; he instructs classes at senior centers, colleges, and a botanical garden where Tony works with MS Focus as an online Tai Chi instructor.



Terri McLaughlin, a retired mother of three, an MS patient since the 1980s, is from Greenville, N.C. At the time of her diagnosis, Terri remembers feeling "afraid and uncertain about my future physical and mental abilities." After tonight's gala, Terri hopes attendees will understand that despite negative personal effects that there is still an opportunity for MSers to look and feel good.



From Wellington, Fla., Kim Monaco is a retired teacher and librarian. Kim believes that this evening's show will demonstrate to attendees how MS affects each person and how "we do not want to be invisible." Kim feels that all MSers deserve to be "out and about, wearing beautiful clothing and attending fun events like everyone else."



Carlene Neugesser, from Lake Worth, Florida is a retired teacher. Carlene is a 48 year MS Warrior who continues to smile and feel "great", as she believes that complaining will not be helpful. Support and love from her through her MS journey is evident as her two teenage granddaughters recently put together an MS Focus fundraiser that brought in nearly \$10,000.



Diane "Didi" Nguyen hails from Middleberg, Fla.. Didi was diagnosed with tumefactive Multiple Sclerosis, a rare type of the illness in 2018. She made it her mission to advocate for, spread, and bring awareness about the many forms of MS. She struggled with self-confidence when first diagnosed, but now realizes that adaptive fashion can help show how beauty comes in all forms.



Debi Shulman, from Boca Raton, Fla. diagnosed in 2008, feels this is a celebration of resilience, hope, and the power of community. Debi believes that guests attending the show should feel uplifted and inspired. "They should know that this is much more than just a fashion show – it's a powerful statement of strength, courage and unity in the face of multiple sclerosis."



Barbara Teller, from Pittsburgh, Penn., is a longtime friend of MS Focus and is happy to contribute her support to this community. Barbara wants people to recognize that not everyone with MS has an ambulatory disability. “Just because I can walk doesn't mean I don't have other significant physical issues. Just writing this is exhausting!”



A veteran MS Focus on Fashion model, Phoebe Walker lives in Merritt Island, Fla. Working full time as the founder of the nonprofit DAMMS411 INC, she also spends time as a dancer and a writer. Phoebe has returned as a model for this event because she enjoyed last year's so much and she wants to “bring hope and joy” to others with MS.



A powerful MS veteran, Heather Grant Stossel joins us from Davie, Fla. Heather is retired, yet tries to live a full life as she believes that “...MS is not a death sentence.” Heather wants everyone to understand that people with MS can get out and live and that they can “have fashion as part of their lives.” She is taking time as a model on the runway tonight to prove this.



**EMD
SERONO**

**proud supporter of
MS FOCUS
ON FASHION**

EMD Serono is the healthcare business of Merck KGaA, Darmstadt, Germany in the US and Canada.

©2025 Merck KGaA, Darmstadt, Germany or its affiliates.

All rights reserved.

US-NONNI-02391

Printed in USA

09/25

Strength Never Goes Out of Style.

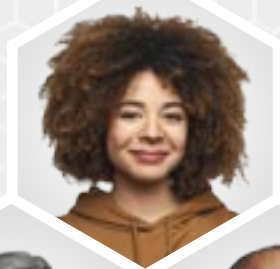
Celebrating an Evening of Style
Strength & Hope



Baggett Law
PERSONAL INJURY LAWYERS



**FIERCELY
FOCUSED ON
MULTIPLE
SCLEROSIS**



LEARN MORE ABOUT OUR FEARLESS
PURSUIT AT [TG THERAPEUTICS.COM](https://www.tgtherapeutics.com)

In Support of MS Focus on Fashion — Empowering the Mission of the Multiple Sclerosis Foundation.

Chase Skorupa, Esq.
Personal Injury Attorney



SERVING ALL OF
FLORIDA

904-670-0083
@CHASECOMPENSATION

CAR ACCIDENTS
SLIP AND FALLS

MEDICAL MALPRACTICE
WRONGFUL DEATH

**GENENTECH IS
PROUD TO SUPPORT
THE MULTIPLE
SCLEROSIS
FOUNDATION**

Genentech
A Member of the Roche Group

© 2025 Genentech USA, Inc. All rights reserved.
Printed in the USA. M-US-00029613(v1.0) 10/25

MULTIPLE SCLEROSIS CENTER OF EXCELLENCE



Left to Right: Jeffrey Hernandez, DNP, Leticia Tames, MD, Melissa Ortega, MD, Crystal Dixon, MD, Flavia Nelson, MD, Silvia Delgado, MD, Stephanie Poon, MD, Kottli Rammoñan, MD, Idélis Martínez, APRN
(Not Pictured: Ramon Flores Gonzalez, MD)

The Multiple Sclerosis Center of Excellence is proud to support the

Multiple Sclerosis Foundation



"Learn More about our Team & their Research Studies"

 **Health**
UNIVERSITY OF MIAMI HEALTH SYSTEM



Our Programs and Services

MS Focus is here for you, offering programs to assist with the critical needs of people affected by MS and services to help them maintain health and well-being. All our programs and services are provided free of charge.

National Toll-free Helpline

Available in English (888-MS-Focus [673-6287]) and Spanish (800-448-4727), callers receive personal attention and assistance from service coordinators and peer counselors.

Homecare Assistance Grant

Provides short-term homecare services, caregiver respite, and therapy services (physical, occupational, and speech therapy).

Emergency Assistance Grant

Addresses urgent needs to help individuals with MS maintain a safe home environment by offering financial assistance with rent or utility payments.

Transportation Assistance Grant

Provides transportation for individuals with MS through Uber and Lyft, to and from neurology appointments, infusion centers and MS centers.

Assistive Technology Program

Offers equipment and devices that assist with daily activities, from canes to voice recognition software.

Cooling Program

Gives cooling vests and accessories to those with MS-induced heat intolerance.

Computer Program


Provides laptop or desktop computers so people can connect to the world of support available online.

Healthcare Assistance Grant

Funds one visit and one follow-up visit with a neurologist for uninsured MS patients.

Lending Library

Loans hundreds of books, DVDs, and other educational materials across the United States, postage paid.



Support Group Program

Assists in the creation and continuation of independent support groups across the United States, affiliated under the MS Focus Independent Support Group Network umbrella.

Information and Referral

In addition to receiving referrals from our National Toll-free Helpline, individuals can find resources in their community through our website, GatherMS.com.

Periodicals and Publications

Magazines, newsletters, brochures booklets, an fact sheets that address every aspect of life with MS.

Public Education and Awareness

MS Focus hosts education and awareness programs across the

United States and Puerto Rico, including offerings for people with MS, caregivers, physicians, and the general public.

Services for Healthcare Workers

Grants support patient care and quality of life research, free patient materials, and recruitment assistance for clinical trials.

National MS Education and Awareness Month[®]

The annual nationwide campaign for MS awareness, launched by the organization in 2003, is held each March.

The vital goals of this project are to raise the public's awareness about MS and to promote the understanding of the scope of MS and its impact not only on those living with the disease but also their loved ones, through the distribution of information and resources.





**WORLD-LEADING PROVIDER
OF MS COOLING SOLUTIONS
FOR OVER 40 YEARS.**



Proud supplier for the MS FOCUS Cooling Program

Congratulations to the Multiple Sclerosis Foundation on all your impactful work!

We are thrilled to support your organization and celebrate your incredible achievements and dedication.

Your commitment to excellence and innovation continues to inspire us all.

polarproducts.com | [800.763.8423](tel:800.763.8423) | polar@polarproducts.com



YOUR VISION. OUR FOCUS.

Our mission is to redefine eye care through a steadfast commitment to vision longevity and transformative innovation. By harnessing the power of regenerative medicine, pioneering therapeutics, and advanced technologies like LASIK, Laser Cataract Surgery, and the groundbreaking Light Adjustable Lens, we strive to deliver unparalleled, personalized care. At YES, we are dedicated to enhancing lives with clearer, healthier vision, empowering our patients and community for generations to come.

- Cataract & LASIK Surgery.
- Retina & Macula Care.
- Glaucoma Management.
- Dry Eye Treatment.
- Comprehensive Eye Exams.

YES IS PROUD TO SUPPORT THE MULTIPLE SCLEROSIS FOUNDATION.

**YOU'RE EYE
SPECIALISTS**
AMERICAN OPTOMETRIC SOCIETY

AVENTURA|FORT LAUDERDALE|PEMBROKE PINES|PLANTATION|WESTON
CONTACT US: 954-799-3405 [YESYESPECIALISTS.COM](https://www.yeseyespecialists.com)



Gemma di Luna

•The Italian Luxury Collection•

Proud Supporter of
MS Focus on Fashion



EB ENOVATIONBRANDS
Innovative Wine & Spirits Importer

©2025 Imported from Italy by Enovation Brands, Inc., Aventura, Florida 33180 PLEASE DRINK RESPONSIBLY



LAUREN
Living with Multiple Sclerosis



MAKING BREAKTHROUGHS HAPPEN

Biogen is proud to support the
MS Focus on Fashion Gala 2025

GUITARS OVER GUNS

IS PROUD TO STAND WITH THE

MULTIPLE SCLEROSIS FOUNDATION

www.guitarsoverguns.org



QuickRX

SPECIALTY PHARMACY

PROUD SUPPORTER OF

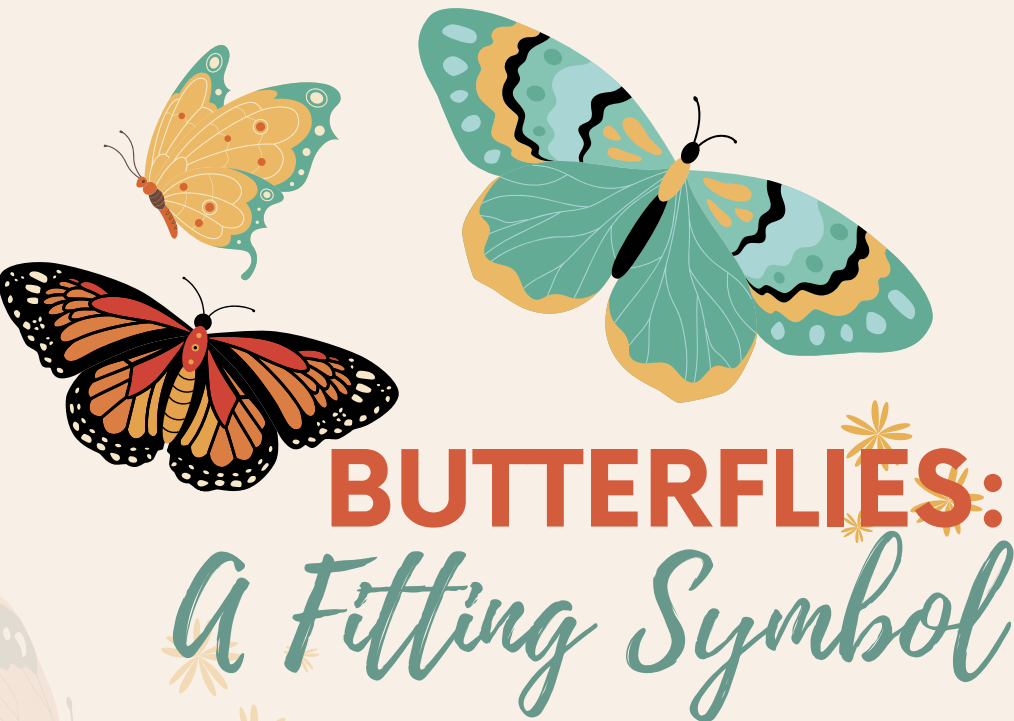
MS Focus on Fashion



quickrxspecialty.pharmacy

917-830-2525





BUTTERFLIES: *A Fitting Symbol*

Seeing tonight's décor, you may be wondering "what do butterflies have to do with MS?" The MS community has embraced the image of a butterfly as a powerful symbol of transformation, resilience, and strength.

Though a butterfly may appear fragile, it is remarkably resilient. Butterflies endure storms, extreme environments, and can survive with damage to up to 50% of their wings. Similarly, it may appear that MS weakens a person, but look closely and you'll see the strength it takes to survive an unpredictable disease, an environment not built for people with chronic illness or disability, and the damage their bodies undergo.

What makes a butterfly so tough? The struggle to transform. When a butterfly completes its metamorphosis, its wings are immature and untested. As it struggles to break free of its cocoon, the effort helps the butterfly's wings to grow in strength. People with MS experience a similar transition from the time before diagnosis to the time after, when they grow in strength and develop the courage necessary to fight against MS. In time, they too "take flight" – thriving despite living with a chronic condition for which there is currently no cure.

With your support of the work of the Multiple Sclerosis Foundation tonight, you are helping transform lives every day and allowing those living with MS the chance to live their best life with dignity and purpose.

danny jelaca

salon & spa

**PROUD SUPPOTER OF
MS FOCUS ON FASHION**

300 Alton Rd #100a, Miami Beach, FL 3319
(305) 604-9696



Fashionable Canes
CANES AND WALKING STICKS

Proudly Supporting
MS Focus on Fashion 2025

We sincerely thank the Multiple Sclerosis Foundation for their tireless contributions to the MS community, their great work, and for making a genuine difference in the lives of many.

Empowerment through Style

For the MS community, we redefine mobility. Our fashionable canes blend function and style, empowering you to walk with pride and make a brilliant statement.

StyleStix
The Difference is Color



Wishing everyone a night of Brightness and Hope!

fashionablecanes.com | @fashionablecanes



DIAMONDS DIRECT

Diamonds Direct stands with the Multiple Sclerosis Foundation on bringing brilliance to an extraordinary cause.

DIAMONDS DIRECT AVENTURA

19001 Biscayne Blvd, Aventura, FL 33180
754-202-1023

DIAMONDS DIRECT BOCA RATON

21078 Saint Andrews Blvd, Boca Raton, FL 33433
561-414-2091

DIAMONDS DIRECT PALM BEACH GARDENS

2899 PGA Blvd, Palm Beach Gardens, FL 33410
561-235-3383

Not an actual patient.



Celebrating *every stitch* and *story*

Sanofi is proud to support MS Focus on Fashion and applaud the voices driving awareness and inclusion in the MS space.

sanofi



With Heartfelt Thanks to Nancy Volpe Beringer

From the bottom of our hearts, thank you for the extraordinary gift of your time, talent, and generosity. Your bespoke adaptive couture creations are far more than beautiful garments – they are powerful statements of inclusion, dignity, and hope.

By donating your artistry and materials to the 2nd Annual MS Focus on Fashion, you aren't just helping to raise vital support for people living with multiple sclerosis – you are helping to shine a light on their strength, individuality, and resilience. Every stitch, every thoughtful detail reflects your compassion and your belief that fashion should empower everyone.

Your work inspires everyone in this room and reminds us how creativity and kindness can change lives. We are deeply grateful for your partnership and for the beauty you bring to the world, both through your designs and through your heart.



With gratitude,
On behalf of The Multiple Sclerosis Foundation,
our staff, and those we serve

Shalloway & Shalloway, P.A.

PROUDLY SUPPORTS

MS FOCUS ON

Fashion

Proud Supporter of MS Focus on Fashion



EB ENOVATIONBRANDS
Innovative Wine & Spirits Importer

©2025 Imported from Italy by Enovation Brands, Inc., Aventura, Florida 33180 PLEASE DRINK RESPONSIBLY



#FPLCares

At Florida Power & Light Company we are working together with the communities we serve to make Florida an even better place to raise a family and do business.



MEMORIAL HEALTHCARE SYSTEM

is

Proud to Support


the

**Multiple Sclerosis
Foundation**

and

MS Focus on Fashion



Memorial Regional Hospital | Memorial Regional Hospital South
Joe DiMaggio  Children's Hospital | Memorial Hospital West
Memorial Hospital Miramar | Memorial Hospital Pembroke

Our Heartfelt Thanks To:

Presenting Sponsor

Novartis*

Runway Sponsor

Genentech*

Gift Bag Sponsor

EMD Serono*

Style Sponsor

Sanofi*

Photo Booth Sponsor

Memorial Neuroscience
Institute*

Photography Sponsor

Genentech*

Cocktail Reception Sponsor

Chase Compensation

Valet Parking Sponsor

Baggett Law

Coffee Cart Sponsor

TG Therapeutics*

Fashionista Sponsors

Biogen

Chazin

Florida Power & Light
Company*

Polar Products*

QuickRX

Sage Law Offices*

Shalloway & Shalloway P.A.

University of Miami

Multiple Sclerosis Division

Print Sponsor

Gallagher

** denotes repeat sponsor*

In Kind and Vendors

Our In Kind Sponsors

Be Well

Cadense Shoes

Danny Jelaca Hair

Diamonds Direct

Fashionable Canes

Gemma Di Luna Wines

High Falutin' Furry Babies

I Heart Radio

Libarare

Magna Ready

Marsha Haffizulla

Nancy Volpe Beringer

Out of the Closet

The Artist Monet Beauty

Tito's Handmade Vodka

We Couldn't Do It Without You

Charity Connections

Docuvision

DJ Jean

Downtown Photo

Fast Signs

Julie Guy

Lead Production Group

Ron Magill

Perfect Look Photos

Print Basics

Sixth Star Entertainment

Westin Fort Lauderdale

Beach Resort

Thank You to our Silent Auction Item Donors

Allied Kitchen and Bath
Alexis Bittar
Anthony's Coal Fired Pizza &
Wings
Arts Ballet Theater of Florida
Bark Box
Bonaventure Golf Club
Butterfly World
Capital Grille
Colony West Golf Club
Doris Market
Eastern Acupuncture and
Wellness
Eddie V's Restaurant
Florida Panthers
Fort Lauderdale Country Club
Fort Lauderdale Film Festival
Fort Lauderdale Marriott North
Grand Pams Golf Course
Hardrock Hotel and Casino
Hollywood Hot Glass
Internal Arts, Inc.
Island Queen Cruises and
Tours
Kendra Scott

Lis Castella Design
Brenda Man-Fletcher
Matteo's Trattoria
Kasey Minnis
Museum of Discovery and
Science
NSU Art Museum
Fort Lauderdale
Oceans 234 Restaurant
Pasta And
PRP Wine International
Shin Wellness Services
Sonesta Fort Lauderdale
Beach
Sparkling Image Car Wash
Spirit Airlines
Tai Chi in Florida
Tidal Cove Water Park at
JW Marriott Turnberry Resort
Total Wine
Tower Club Restaurant
Phoebe Walker
Westin Fort Lauderdale
Beach Resort

Special thanks to the members of our committee who worked tirelessly to obtain so many of these donations. We regret any omissions due to our printing deadline.



MS Focus Supporters 2024-2025

1,000-4,999

Ameriprise Financial
All Saint Episcopal Church
Scott Andrick
Caroline Arakelian
Stephanie Aranyos
David Arendsen
Eileen R. Austin
Baggett Law Firm
Bank of Eastern Oregon
Daphna Bartov
Linda Bergholz
Cherie Binns
Biogen
Blackbaud Giving Fund
BNY Mellon
Stephen Boyd
Harold Brady
MaryEllen Bross
CAF Aid Foundation
Stephen Catlett
Donald Chu
Steven Ciarleglio
Colao Family Charitable Fund
Jeffrey J. Collinson
William Cornwell, Jr.
Jennie Cullin
DAF Giving 360
Frank & Susan D'Alexander
Mark & Cindy DeBellis
Amy Eaton
Nancie Echeverria
ExThera Medical
Sharon Feeny
Jay Bone Fettinger
Darrell Fisher
The Foster Family Foundation
Fraternal Order of Eagle Auxiliary
Monica Freissle & Troy Lewis
James Galloway
Kathryn Garnett
Patricia Gordon
Greater Purpose Project Hero

Tessie Grosby Charitable Foundation
The Mark & Royce Gussack Fund
Janis Harris
J. Haverson
Derrick Herndon
Holy Cross
Kansas Baptist Church
Safwan Khan
Dolores Kleinman
Charles T. Koebel
Mary W. Lernihan
Robert Loss
Yinhe Lu
Joanne Maguire
Richard Mandel
Kenneth & Leslie Mann
Robert Martin
Shawn McIntosh
George Meares
Martha Mele
Daphne Mon
Robert J. Mulcahy
Elaine Murray
Suzanne O'Connell
Octane Raceway
David Ogrin
Gary Orłowski
John F. Paton
Keith & Deborah Pitts
Katherine L. Pitzer
The Prager Metis Charitable
Foundation
Progressive Casualty Insurance
S. Pullman
Punjabi Community Hour, Inc.
QuickRX
Andrea Rampe
Michael C. Randall
John J. Reilly
Mike & Cathy Rein
Melinda Reynard
Victor Rocco
Spencer & Linda Roessner

Jimmy Rocket
Dr. A. Everett & Ruth Rosen
Foundation
Bruce Rubinger and
Joan E. Schwartz
Nicholas Salerno
Sanofi
John Schafer
Stacy Schwartz
Sidney & Joanne Scott
Shalloway & Shalloway
Andra Shapiro
Sheriff's Foundation of
Broward County, Inc.
Ronald Silbergeld
William & Sylvia Silberstein
William Solomon
Sidney J. Spear
George Stamos
Richard Standifer
The Standifer Manning Family Fund
Benjamin Steelman
Jill Stone
Louis & Mary Tagliatela Foundation
Julie Tanner
University of Miami
Multiple Sclerosis Division
Verint America's Inc.
Walgreens
Walkerton Elementary School
Warshauer Family
Jane Washington-Edmonds
Wells Fargo
Elizabeth M. White
Tom Winterton
Jason & Tamara Wolf

5,000-14,999

Bonnie Bolding
Charitable Foundation
Chase Compensation
CriticalRiver Inc,
Fidelity
Florida Power & Light Company
Sahib Grover

Heart of Illinois
Community Foundation
Mary Ann Kennedy
Francis Morandi
Norris Orgard & Jill Staats
Ozarks Neurological Foundation
Julie & Richard Pennington
John Pingree
Polar Products
Mary Jo Reiss
Sage Law Offices
Annie Senatore
Donald & Jean Showalter
Gregory Siegel
Kara Skorupa
Solomon Family Foundation
TD Bank
Your Eye Specialists

10,000-24,999

Bernatchez Family Foundation
Matthew Crews
Susan Dietrich
Memorial Neuroscience Institute
Karen Ramacorti

15,000-29,999

John & Audrey Allen
Charitable Trust
Traci Ceras
Jay Paul Deratany

50,000 and above

Gerald Duane Tryloff
Joann M. Tryloff

Pharmaceutical Funding Partners

Biogen
EMD Serono
Genentech
Novartis
Sandoz
Sanofi
TG Therapeutics
Viatris



Does MS make walking a challenge?

Cadense could be the solution

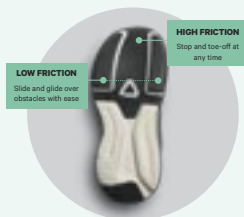
Over 10,000 people with MS have already discovered how Cadense Adaptive Shoes help them walk with more ease, safety, and confidence.

If walking feels harder than it used to – if you're tripping, dragging your toes, or struggling to stay steady – you're not alone.

That's why we created **Cadense Adaptive Shoes**: patented footwear designed specifically for people with walking challenges from MS.

With our unique **Variable Friction Technology**, Cadense shoes gently glide over obstacles – then grip securely when it's time to stop or push off. No laces to tie. Easy to put on. Super stylish to wear anywhere.

Thousands of MS warriors are already walking better in Cadense. You could be next.



"I can walk longer, steadier, and more confidently. These shoes gave me freedom again."

— Beth, living with MS in Florida



Scan the QR code or visit www.cadense.com/ms and use code **MSFOCUS** at checkout for **\$15 OFF** your first order!



Now shipping in all sizes and colors.



Proud Supporter of MS Focus on Fashion

More Ways to Show Your Support

Considering Organizing a Local Fundraiser?

Team MS Focus: Friends, Family, Co-Workers and You – “A Winning Combination for Success”



Join community members across the country dedicated to raising much needed funds for expanding the MS Focus programs and services through local events. Share your ideas, whether large or small. We'll also show you what has successfully worked for others. Help make a difference in people's lives and have fun doing it.

Contact: Debra Forman

at 800-225-6495 or email debra@msfocus.org

ROLL OVER MS



What is Roll Over MS?

A 3K (1.86 mile) stride to raise funds for MS Focus' critical assistance programs to improve the lives of people with MS



When and where is Roll Over MS?

March 28, 2026,
Location TBA



How can I Participate?

Walk, ride your bike, wheel a wheelchair, pull a wagon!



How Do I Get Involved?

Start a team, join a team, fundraise, and join us!

SCAN HERE
FOR MORE
INFORMATION
AND TO SIGN
UP





NATIONAL HEADQUARTERS
6520 NORTH ANDREWS AVENUE FORT LAUDERDALE,
FLORIDA 33309

NATIONAL TOLL-FREE HELPLINE:
888-673-6287

WEBSITE:
www.msfocus.org
E-MAIL: support@msfocus.org

ADMINISTRATION: 800-225-6495

MS FOCUS IS RECOGNIZED BY THE IRS AS A 501(C) 3 ORGANIZATION.
CONTRIBUTIONS ARE TAX-DEDUCTIBLE TO THE FULLEST EXTENT ALLOWED
BY LAW.